

1st Batch of Words

1. **Software:** Programs or instructions that tell the computer what to do.

- A. Home
- B. Business
- C. Entertainment
- D. Educational.



2. **Hardware:** Physical equipment of the computer.

3. **Motherboard:** The part of the computer that holds the major components.



4. **CPU: Central Processing Unit:** The brain of the computer.

- A. **Silicon** – What the CPU is made out of
- B. **Bunny Suit** – The suit they wear at CPU factories to keep them clean
- C. **Transistor** – Little switches inside the CPU
- D. **Binary** – The language the CPU speaks (made of 0's and 1's)
- E. **Bit** – a 0 or a 1 in computer language (Transistor on = 1, Transistor off = 0)
- F. **Byte** – It takes eight 0's and 1's to make a letter of our alphabet (01000001 is a capital letter A for example)



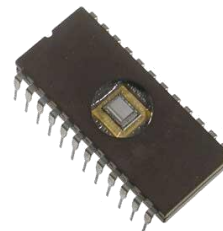
5. **RAM: Random Access Memory.**

- A. Holds binary information temporarily.
- B. Is erased when the power goes off.



6. **ROM: Read Only Memory.**

- A. Not erased when the power goes off
- B. Pre-programmed at the factory.
- C. Contains start-up instructions for the computer.



7. **Adapter Card:** Specialized hardware for our computer

- A. Video cards
- B. Sound Cards
- C. Modems
- D. Network Cards.



8. **Peripheral:** Hardware that is on the outside of your computer.

- A. Keyboard
- B. Mouse
- C. Speakers
- D. Monitor
- E. Printer
- F. Scanner
- G. Game controller



Put this in your portfolio!